

Instruction to register on EPO for the usage of OPS version 2021

With the 2021 version of the OPS, the EPO has put a limit on the download volume for free use. In order to be able to assign the volume of the data, it is also necessary to register on their website.

That means for you as a company / user that you have to register on EPO as a user of the OPS for being able to obtain patent data via the XPAT system which uses OPS.

You don't grab the patent data anonymously using XPAT any longer, because you are known to the EPO as recipient of the data due to registration.

This approach of the EPO is due to the fact that there have been several successful attempts in the past to automatically access large amounts of data at the EPO in disregard of the „Fair Use Charter“, primarily from an unspecified state in the middle of the Asian continent. Also, OPS should be available to external users without overloading the servers, so that the EPO is not impaired in the performance of its core tasks.

With such a registration you are then entitled to download up to 4GB per week from the OPS. All data (bibliographies, full texts, PDFs, legal data, graphics) are added up in your data volume.

Using this volume intelligently, this corresponds to an approximate 45,000 data records including graphics per week, but it is reduced to a good 3,200 documents per week when used exclusively with PDFs.

You can register on the following website <http://ops.epo.org>.

[Home](#) > [Searching for patents](#) > [Data](#) > [Web services](#) > [Open Patent Services](#)

Linked open EP data
Bulk data sets
Web services
Open Patent Services
FAQ
European Publication Server
Coverage, codes and statistics

Open Patent Services (OPS)



Open Patent Services (OPS) is a web service which provides access to the EPO's data via a standardised XML interface. It does this using RESTful architecture.

[Register](#)

[Log in](#)

> [Test OPS](#)

All users of the grabbers of the XPAT system must register themselves and their company on the EPO. The „Register“ button takes you to a registration form.

Home → [User account](#) → User account

Account Details

Username *

Spaces are allowed; punctuation is not allowed except for periods, hyphens, apostrophes, and underscores.

E-mail address *

A valid e-mail address. All e-mails from the system will be sent to this address. The e-mail address is not made public and will only be used if you wish to receive a new password or wish to receive certain news or notifications by e-mail.

Password * Password strength: _____

Confirm password *

Provide a password for the new account in both fields.

Name Details

Title *
- Select a value -

First Name *

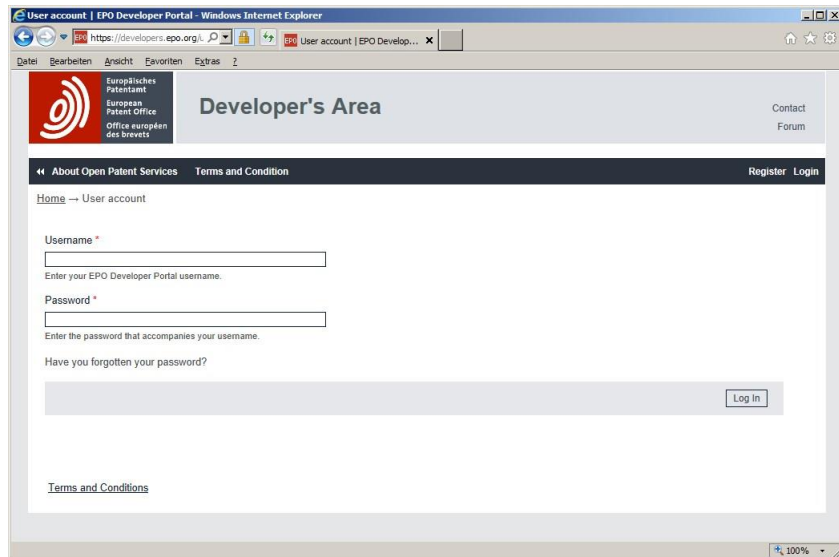
Last Name *

Company details

Organisation/Company name *

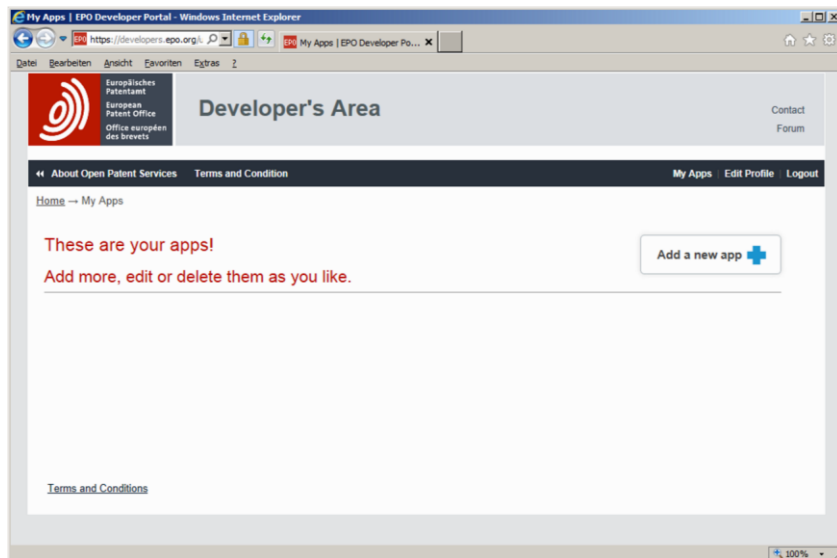
Organisation, company, school, on behalf of which the user is registering

After you filled the form out and sent it, you will receive an e-mail with the conformation after verification by the EPO. Then you can log into your account using the user name and password you have assigned yourself. This is also don't on the <http://ops.epo.org> website by using the "Log in" button.

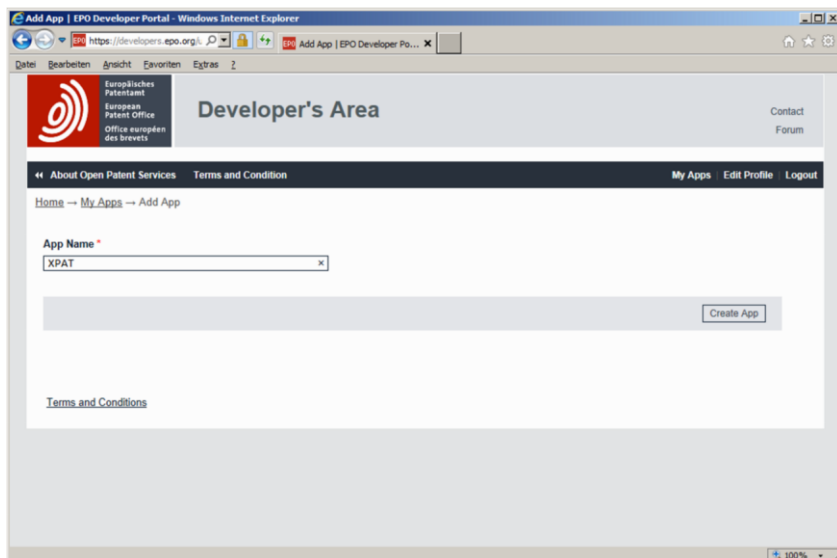


To receive the keys ("Consumer Key" and the "Consumer Secret Key") for the OPS, log in here please. The following website should pop up.

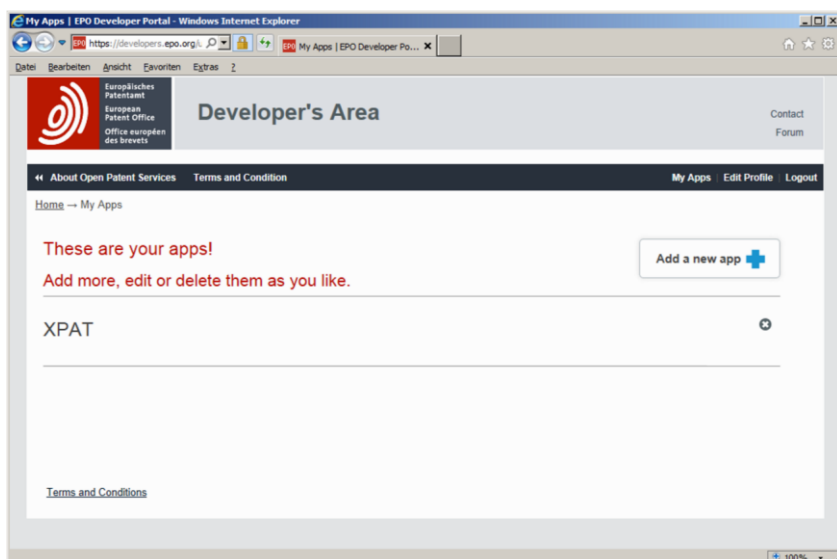
For generating the keys you have to declare one or more applications through choosing in the menu "My Apps".



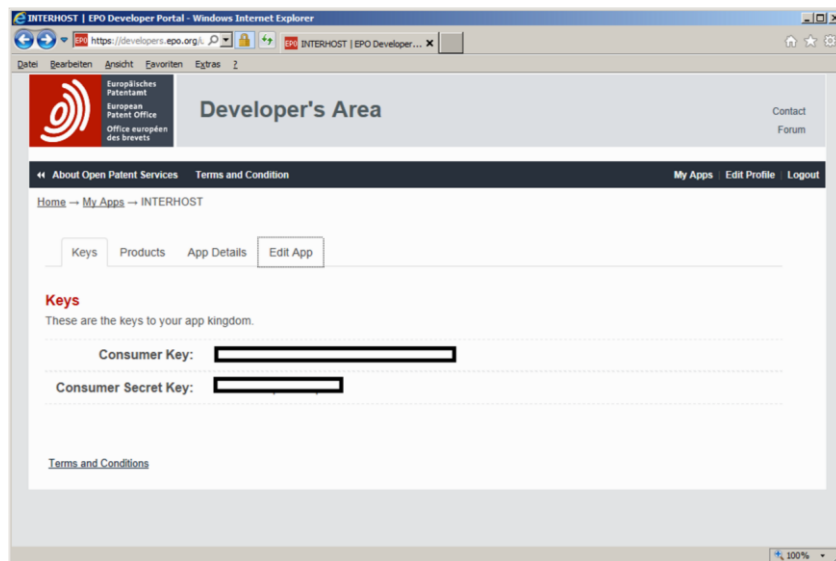
With pressing the "Add a new app" button on the following page you create a new application for example with the name "XPAT".



The new application is from now on then viewable in the list.

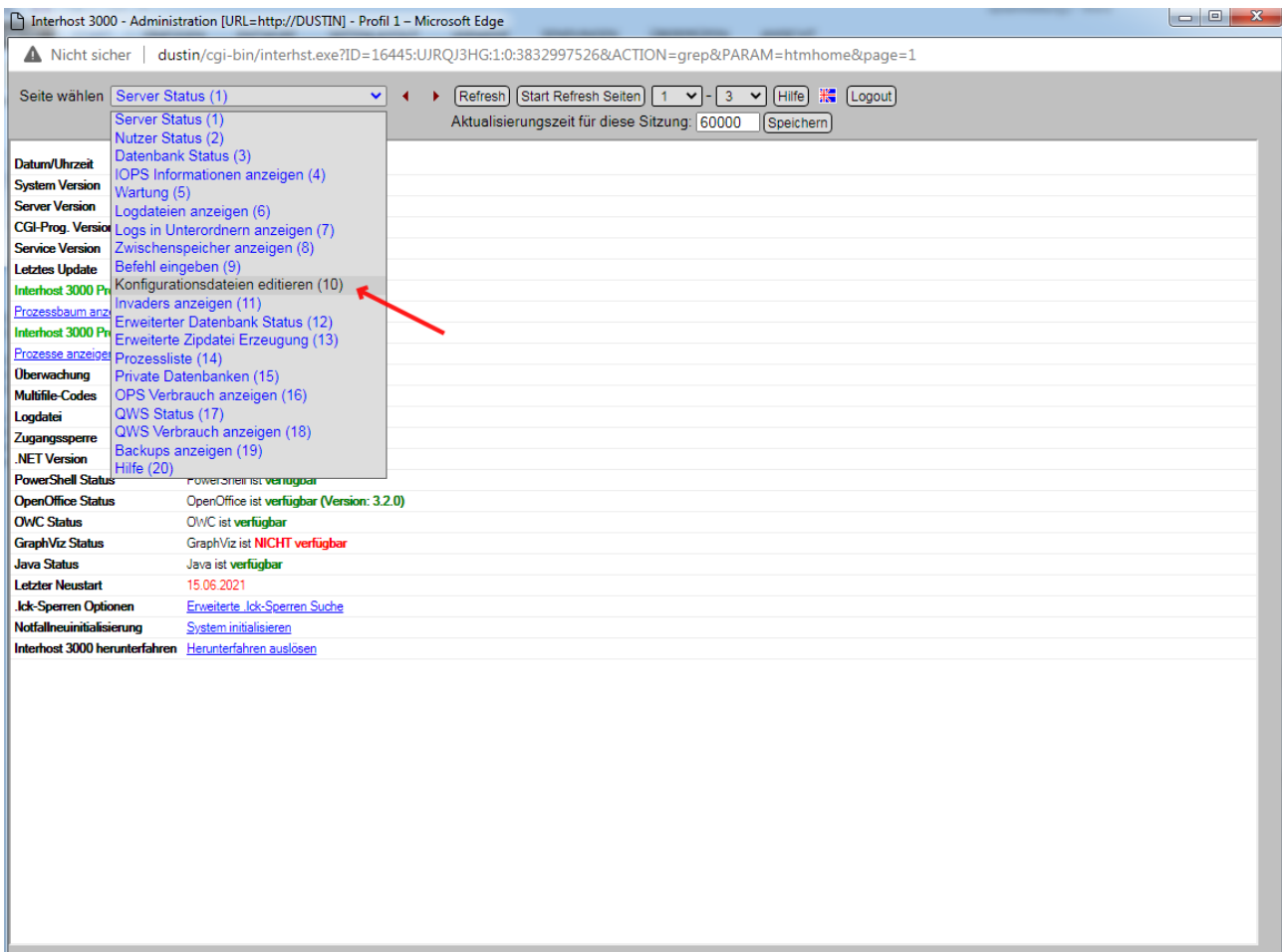


If you click in that list "These are your apps!" the name of your application, you can see under the tab "Keys" the "Consumer Key" and the "Consumer Secret Key".

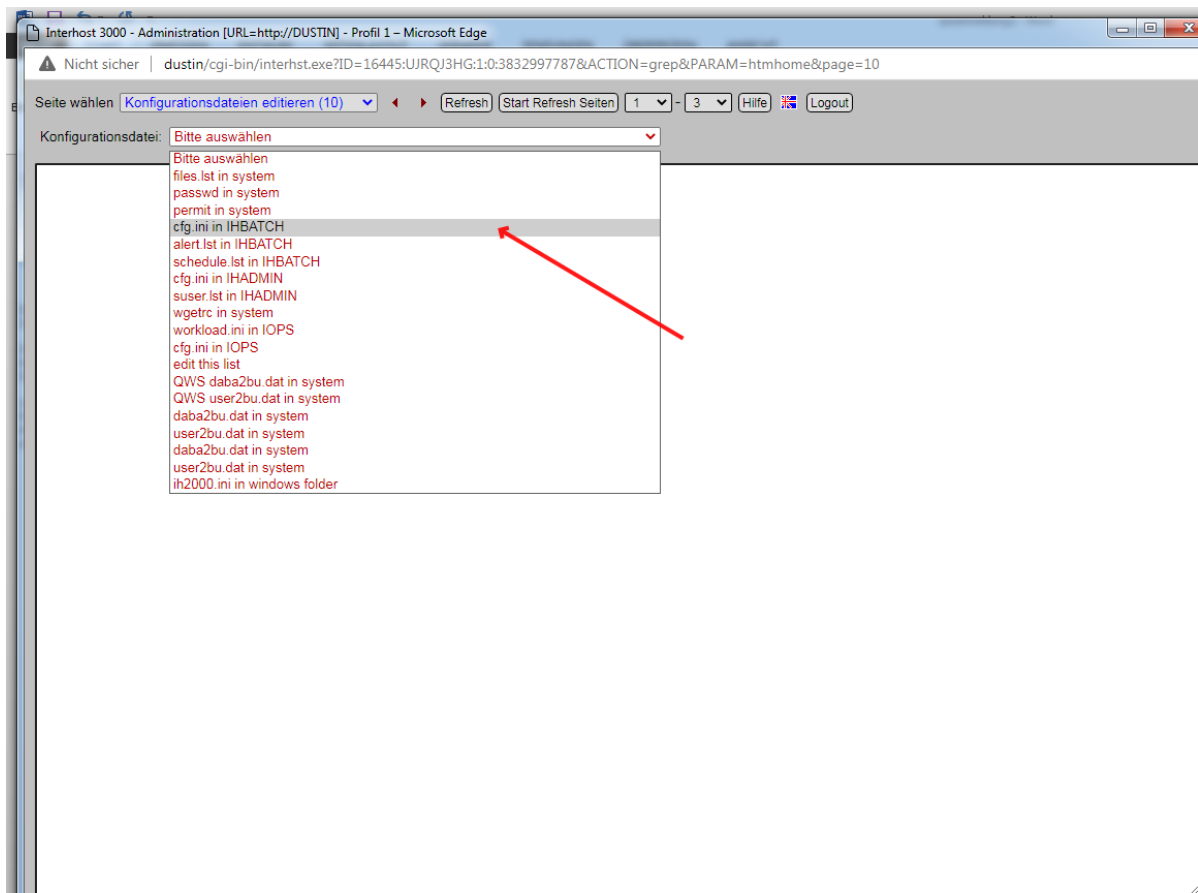


Those two keys are required to use the OPS-Grabber.

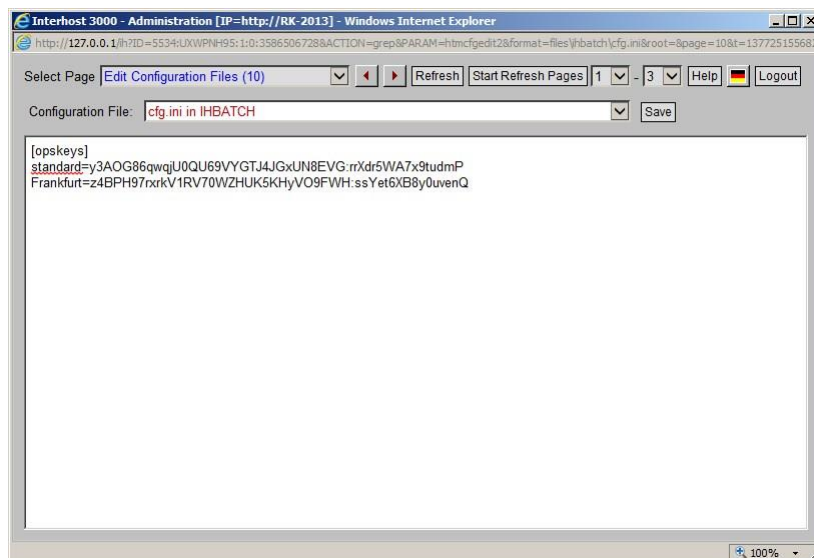
They need to get written down in the configuration file of the IHBATCH database under the point [opskeys]. For that you log in as IHADMIN and then open the page number 10 "Edit Configuration Files". Usually G.E.I Kramer & Hofmann takes care of putting the keys at the right place during the first installation of the system.



Then you choose "cfg.ini in IHBATCH".



Now you can find one point that says "[opskeys]" and there you write Standard="Consumer Key":"Consumer Secret Key". Please make sure you are implementing the colon between both keys.



If you are not using any other business units, the parameterization of the OPS is completed and the Grabber is functional.

Other business units can also be implemented at this point. For that you choose another name for example the location or the company name and behind you also put a "Consumer

Key" and "Consumer Secret Key". As above do not forget the colon please. Also, do not use blanks in your name of the business unit.

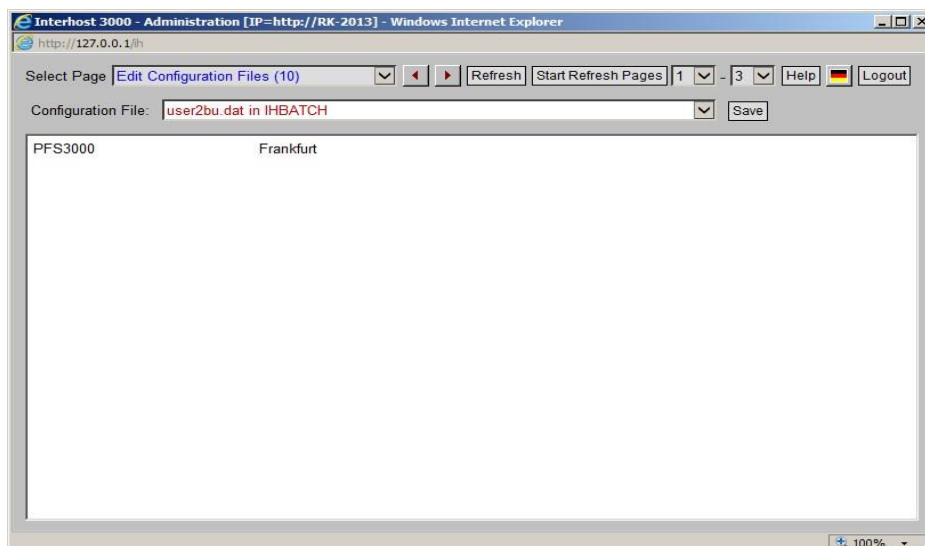
If you are generating the keys for another application, but of the same user account of the OPS, so the download rates of the OPS-Grabber get assigned to the different business units, but the sum of those can't exceed 4GB per week. For independent companies which are sharing an interhost, can create different user accounts in OPS. Because of that each company is able to download up to 4GB per week.

The context between a business unit and the assigned keys with a Grabber order can either be created in the name of the targeted database in which the downloaded files of the Grabber get stored or with the name of the user who created the Grabber order. If no assignment is possible or necessary, so always the entry "Standard" would be used. **The entry „standard=" has to always exist!**

If an assignment is necessary, so this gets achieved with two dictionaries which you can also register on page number 10 of IHADMIN under "daba2bu.dat in system" and "user2bu.dat in system".



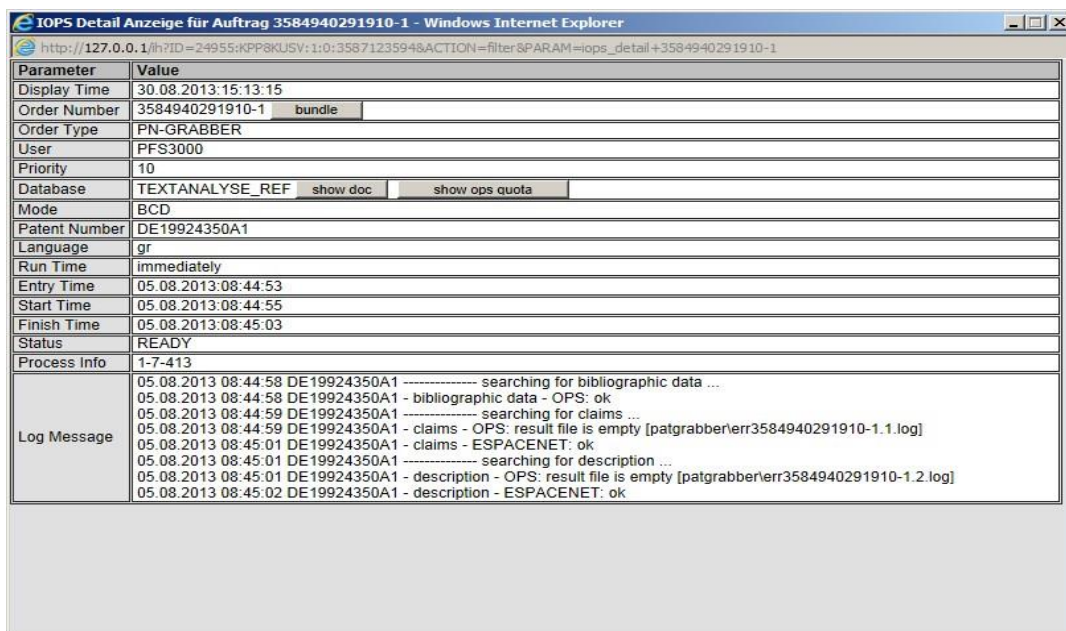
These are divided into two column lists which show on the left side the database- or username and on the right side the name of the business unit which got assigned in the cfg.ini. Please make sure that in the right column the entries have to be flush with each other.



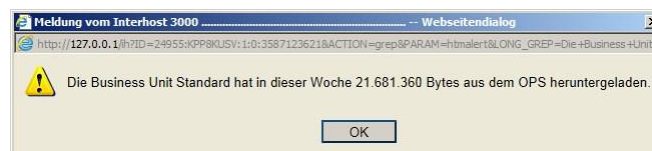
The OPS-Grabber after saving use the information and record the actual status of the downloaded files in relation to the actual week. The new page number 16 of the IHADMIN is used to display the current status of all used business units.



The users of the XPAT system can call up the actual status of the assigned business unit in detail of the IOPS. There is a button called "show ops quota" at every order.



The actual status you can see in the message box.



More changes for OPS aren't necessary.

If there are no declared keys for OPS or any mistake during the entry, an error message will be shown in the detail display of an IOPS-order (OPS: authorization codes missing).

NOTE: The entry of a key for a business unit has to always include „Standard“.